




Sri Indu Institute of Engineering & Technology

Recognized Under 2(f) of UGC Act 1956
Approved by AICTE, New Delhi
Affiliated to JNTUH, Hyderabad.

4.1.1- INFRASTRUCTURE AND PHYSICAL FACILITIES FOR TEACHING AND LEARNING

INDEX

S. No.	Particulars
1	SUMMARY SHEET OF INFRASTRUCTURE AND PHYSICAL FACILITIES
2	A BLOCK – BUILDING PLAN
3	B BLOCK – BUILDING PLAN
4	D BLOCK – BUILDING PLAN
5	LAND DOCUMENTS
6	MASTER PLAN OF THE CAMPUS
7	GEO-TAGGED CLASS ROOMS AND LABORATORIES PHOTOS
8	GEO-TAGGED AUDITORIUM PHOTOS
9	GEO TAGGED CANTEEN PHOTOS
10	GEO TAGGED GIRLS HOSTEL PHOTOS


PRINCIPAL
Sri Indu Institute of Engineering & Tech.
Sherguda(V), Ibrahimpatnam(M),
R.R. Dist. Telangana -501 510



4.1.1 The Institution has adequate infrastructure and physical facilities for teaching- learning. viz., classrooms, laboratories, computing equipment etc

Department of Mechanical Engineering

Class Rooms:

The Department of Mechanical Engineering has 6 spacious class rooms fully equipped with latest audio-visual aids to make teaching interactive and interesting. Out of 6 class rooms 4 class rooms are equipped with ICT enabled facilities such as LCD projectors, smart interactive board and Wi-Fi and 2 tutorial classes are available.

Laboratories:

There are 13 Laboratories in the Department that are equipped with adequate number of laboratory equipment. Students are allowed to carry out mini projects and major projects in the respective laboratories in different time slots.

Computing Equipments:

The institution has adequate no of computers, laptops, printers, scanners, servers and CC cameras to facilitate computing, internet browsing and surveillance.

Internet and WI-FI:

The institution is completely enabled with Wi-Fi facility and the institution has upgraded its internet speed to 100 Mbps through leased line

Library:

The Mechanical Engineering Department is has collection of Text Books, Reference Books in the Departmental Library to meet the needs of students. Department library provides reference facilities for students. Here students can refer technical and advanced information for seminars and projects. Library holds books and journals related to different areas of Mechanical Engineering. The B.Tech Project / seminar reports of Mechanical Engineering students form a part of the Department Library.


PRINCIPAL
Sri Indu Institute of Engineering & Tech.
Sheriguda(V), Ibrahimpatnam(M),
R.R. Dist. Telangana -501 510



Class Rooms

Sl. No	Room No	Block & Floor	Area in Sq.M	Purpose	Teaching aids available like LCD/ Wifi/LAN Facilities
1	B-304	B Block& Third Floor	83.6 Sq,m	II-B YEAR CLASS ROOM	LCD,Projector/ wifi
2	B-303	B Block& Third Floor	83.6 Sq,m	III-A CLASS ROOM	LCD,Projector/ wifi
3	C-301	C Block& Third Floor	83.6 Sq,m	III-B CLASS ROOM	WIFI
4	C-302	C Block& Third Floor	83.6 Sq,m	IV-A CLASS ROOM	LCD,Projector/ wifi
5	C-303	C Block& Third Floor	83.6 Sq,m	IV-B CLASS ROOM	LCD,Projector/ wifi
6	C-306	C Block& Third Floor	83.6 Sq,m	II-A CLASS ROOM	WIFI

Laboratory Rooms

Sl. No	Room No	Block & Floor	Area in Sq.M	Purpose	Teaching aids available like LCD/ Wifi/LAN Facilities
1	B-001	B Block & Ground Floor	75.4 Sq.m	PT LAB	WIFI/LAN
2	B-004	B Block & Ground Floor	73 Sq.m	ICS LAB	WIFI/LAN
3	B-005	B Block & Ground Floor	82.3 Sq.m	TE LAB	WIFI/ LAN
4	B-006	B Block & Ground Floor	114.5 Sq.m	FMHM LAB	WIFI/LAN
5	S-001	Shed & Ground Floor	111.3 Sq.m	MT LAB	WIFI/LAN
6	S-002	Shed & Ground Floor	73 Sq.m	ENG.METROLOGY LAB	WIFI/ LAN
7	S-003	Shed & Ground Floor	141.6 Sq.m	WORK SHOP	WIFI/LAN
8	S-004	Shed & Ground Floor	31.2 Sq.m	MMS LAB	WIFI/LAN
9	S-004	Shed & Ground Floor	31.2 Sq.m	MOS LAB	WIFI/ LAN
10	S-005	Shed & Ground Floor	31.2 Sq.m	HT LAB	WIFI/ LAN
11	S-006	Shed & Ground Floor	31.2 Sq.m	K&D LAB	WIFI/ LAN
12	C-001	C Block& Ground Floor	71.3Sq,m	CAD&CAM /CNCLAB	WIFI/ LAN
13	S-006A	Shed & Ground Floor	31.2 Sq.m	R&D LAB	WIFI/ LAN


PRINCIPAL
Sri Indu Institute of Engineering & Tech
Shenagur, K. J. Somayajulu
S.R. Das, Telangana 507 510



Sri Indu Institute of Engineering & Technology

Recognized Under 2(f) of UGC Act 1986
Approved by AICTE, New Delhi
Affiliated to JNTUH, Hyderabad.

Department of Computer Science and Engineering

Class Rooms:

The Department of Computer Science and Engineering has 9 class rooms for teaching and learning that are equipped with ICT enabled facilities such as LCD projectors, smart-interactive board and Wi-Fi and 3 tutorial classes. One class room is equipped with smart interactive boards and multimedia facilities.

Laboratories:

The Department has 16 dedicated laboratories with the latest version of hardware and software. They have sufficient well qualified and experienced technical and supporting staff and adequate number of laboratory equipments. Students are allowed to carry out mini projects and major projects in the respective laboratories in different time slots.

Seminar Hall:

The Department has 1 seminar hall with 200 seating capacity and this hall is used for the purpose of conducting guest lectures and seminars.

Internet and WI-FI:

The Department has internet speed with 100Mbps internet leased line for connecting all departments and their laboratories to share the information at the finger tips.

Library:

Computer Science Department's library contains various text books and reference books to cater the needs of the faculty members and students. It also comprises of International and National Journals and Magazines. Various question banks, previous year question papers and project reports are also available for reference. There are 1120 volumes and 10 national and 5 international journals in the department of library


PRINCIPAL
Sri Indu Institute of Engineering & Tech.
Sheriguda(V), Ibrahimpatnam(M),
R.R. Dist. Telangana -501 510



Class Rooms

Sl. No	Room No	Block & Floor	Area in Sq.M	Purpose	Teaching aids available like LCD/ Wifi/LAN Facilities
1	A-101	A Block & First floor	77 Sq.m	IV CSE(C) Class room	LCD,Projector/ wifi
2	A-301	A Block & Third floor	77 Sq.m	II CSE(A) Class room	LCD,Projector/ wifi
3	A-302	A Block & Third floor	77 Sq.m	II CSE(B) Class room	LCD,Projector/ wifi
4	A-213	A Block & Second floor	77 Sq.m	II CSE(C) Class room	LCD,Projector/ wifi
5	A-202	A Block & Second floor	77 Sq.m	III CSE(A) Class room	LCD,Projector/ wifi
6	A-201	A Block & Second floor	77 Sq.m	III CSE(B) Class room	LCD,Projector/ wifi
7	A-208	A Block & Second floor	77 Sq.m	III CSE(C) Class room	LCD,Projector/ wifi
8	A-108	A Block & First floor	77 Sq.m	IV CSE(A) Class room	LCD,Projector/ wifi
9	A-109	A Block & First floor	77 Sq.m	IVCSE(B) Class room	LCD,Projector/ wifi
10	A-212	A Block & Second floor	77 Sq.m	CSE - TUTORIAL ROOM	WIFI
11	A-307	A Block & Third floor	77 Sq.m	CSE - TUTORIAL ROOM	WIFI
12	A-308	A Block & Third floor	77 Sq.m	CSE - TUTORIAL ROOM	WIFI


PRINCIPAL
Sri Indu Institute of Engineering & Tech,
Sheriguda(V), Ibarampattam(M),
R.R. Dist. Telangana -501 510



Laboratory Rooms

Sl. No	Room No	Block & Floor	Area in Sq.M	Purpose	Teaching aids available like LCD/ Wifi/LAN Facilities
1.	A-014	A Block & ground floor	77 Sq.m	PP/OS/ML LAB	WIFI/LAN
2.	A-015	A Block& ground floor	77 Sq.m	PPS LAB	WIFI/ LAN
3.	A-102	A Block& First floor	77 Sq.m	PP/OS LAB	WIFI/LAN
4.	A-105	A Block& First floor	77 Sq.m	DSTC++/ CD/SL LAB	WIFI/LAN
5.	A-106	A Block& First floor	150 Sq.m	PP/ML LAB	WIFI/ LAN
6.	A-107	A Block& First floor	77 Sq.m	DS/CD LAB	WIFI/LAN
7.	A-205	A Block& Second floor	77 Sq.m	DBMS/DM LAB	WIFI/LAN
8.	A-206	A Block& Second floor	77 Sq.m	CN /WT LAB	WIFI/ LAN
9.	A-207	A Block& Second floor	77 Sq.m	DS/CD LAB	WIFI/LAN
10.	D-005	D Block& Ground Floor	77 Sq.m	ITWS LAB	WIFI/LAN
11.	D-006	D Block& Ground Floor	77 Sq.m	SE/JAVA LAB	WIFI/ LAN
12.	D-007	D Block& Ground Floor	77 Sq.m	PPS LAB	WIFI/ LAN
13.	D-112	D Block& First Floor	77 Sq.m	CN AND WT/STM LAB	WIFI/LAN
14.	D-113	D Block& First Floor	77 Sq.m	DS/JAVA LAB	WIFI/LAN
15.	D-114	D Block& First Floor	77 Sq.m	SE/ DBMS LAB	WIFI/ LAN
16.	D-115	D Block& First Floor	77 Sq.m	DM/STM LAB	WIFI/LAN



Sri Indu Institute of Engineering & Technology

Recognized Under 2(f) of UGC Act 1956
Approved by AICTE, New Delhi
Affiliated to JNTUH, Hyderabad.

Department of Civil Engineering

Class Rooms:

The Civil department has 6 class rooms for teaching and learning in which 4 class rooms are equipped with ICT enabled facilities such as LCD projectors, smart interactive board and Wi-Fi . Smart Class Room: one class room is equipped with smart interactive boards and multimedia facilities.

Laboratories:

The department is equipped with modern equipment and highly 9 advanced laboratories. Department of Civil Engineering is spearheaded by highly competent, dedicated, well qualified and experienced faculty. The department laboratories are providing avenues for the students to qualify themselves as a good Civil Engineers and provide contribution to the development.

Seminar Hall:

The Department has one seminar hall and it is used for the purpose of conducting guest lectures, seminars, departmental activities and other co-curricular activities. It is fully air-conditioned and is suitable for international conferences, symposium, meetings, seminars, concerts, presentations and performances. The hall is fully equipped with state-of-the-art audio-visual devices providing services such as video conferencing, a sound system and audio-visual material.

Internet and WI-FI:

The institution apart from the computer laboratories setup for the syllabus programs has provided computer centers for general purposes. Learning is completely enabled with Wi-Fi facility and the institution has upgraded its internet speed to 100 Mbps through leased line.

Library:

The Department of Civil Engineering is well furnished with separate reading room and various technical sections as per AICTE norms. A well equipped, fully computerized and automated library with more technical and reference books and subscribes for national and international journals. It is also a subscriber of various magazines and news papers to cater the needs of students and teaching staff and keeps them update well informed. Various question banks, previous year question papers and project reports are also available for reference.


PRINCIPAL
Sri Indu Institute of Engineering & Tech.
Shenguda(V), Ibrahimpatnam(M),
R.R. Dist. Telangana -501 510



Class Rooms

Sl. No	Room No	Block & Floor	Area in Sq.M	Purpose	Teaching aids available like LCD/ Wifi/LAN Facilities
1	D-314	D Block & Third Floor	73.71 Sqm	II Civil (A) Classroom	LCD,Projector/ wifi
2	D-313	D Block & Third Floor	73.71 Sqm	II Civil (B) Classroom	WIFI
3	D-312	D Block & Third Floor	73.71 Sqm	III Civil (A) Classroom	LCD,Projector/ wifi
4	D-308	D Block & Third Floor	73.71 Sqm	III Civil (B) Classroom	LCD,Projector/ wifi
5	D-307	D Block & Third Floor	50.44 Sqm	IV Civil (A) Classroom	LCD,Projector/ wifi
6	D-306	D Block & Third Floor	73.71 Sqm	IV Civil (B) Classroom	WIFI

Laboratory Rooms

Sl. No	Room No	Block & Floor	Area in Sq.M	Purpose	Teaching aids available like LCD/ Wifi/LAN Facilities
1	S-004	Shed & Ground Floor	140.65 Sqm	Strength of materials lab	WIFI/ LAN
2	D-016	D Block & Cellar Ground Floor	75.2 Sqm	Surveying lab 1, 2	WIFI/LAN
3	D-001	D Block & Ground Floor	141.81 Sqm	Concrete technology lab	WIFI/LAN
4	D-002	D Block & Ground Floor	51.188 Sqm	Transportation engineering lab	WIFI/ LAN
5	D-003	D Block & Ground Floor	138.475 Sqm	Soil mechanics lab	WIFI/ LAN
6	B-001	B Block & Ground Floor	106.875 Sqm	Fluid mechanics and hydraulic machinery lab	WIFI/ LAN
7	D-112	D Block & First Floor	70.2 Sqm	Autocadd lab – 1, 2	WIFI/ LAN
8	D-302	D Block & Third Floor	74.1 Sqm	Engineering geology lab	WIFI/ LAN
9	D-308	D Block & Third Floor	117.4 Sqm	Environmental engineering lab	WIFI/ LAN



Sri Indu Institute of Engineering & Technology

Recognized Under 2(f) of UGC Act 1956
Approved by AICTE, New Delhi
Affiliated to JNTUH, Hyderabad.

Department of Electronics and Communication Engineering

Class Rooms:

The Department of Electronics and Communication Engineering has 9 class rooms for teaching and learning. 9 class rooms are equipped with ICT enabled facilities such as LCD projectors, smart interactive board and Wi-Fi. Smart Class One class room is equipped with smart interactive boards, multimedia facilities and one tutorial class room is available.

Laboratories:

There are 11 Laboratories in the department and the laboratories are equipped with adequate number of laboratory equipment. Students are allowed to carry out mini projects and major projects in the respective laboratories in different time slots.

Seminar Hall:

The Department has 1 seminar hall and this hall is used for the purpose of conducting guest lectures, seminars and other departmental activities.

Internet and WI-FI:

The institution is completely enabled with Wi-Fi facility and the institution has upgraded its internet speed to 100 Mbps through leased line.

Library:

The Department of Electronics and Communication Engineering library contains various text and reference book to cater the needs of our faculty members and students. It also comprises of International and National Journals and Magazines. Various question banks, previous year question papers and project reports are also available for reference. There are 148 books, 529 volumes and 19 national and 18 international journals in the department's library.


PRINCIPAL
Sri Indu Institute of Engineering & Tech.
Bharguda(V), Ibrahimpatnam(M),
R.R. Dist. Telangana -501 510



Sri Indu Institute of Engineering & Technology

Recognized Under 2(f) of UGC Act 1956
Approved by AICTE, New Delhi
Affiliated to JNTUH, Hyderabad.

Class Rooms

Sl. No	Room No	Block & Floor	Area in Sq.M	Purpose	Teaching aids available like LCD/ Wifi /LAN Facilities
1	B-101	B Block & First Floor	77 Sq.m	II ECE(A) classroom	LCD,Projector/ wifi
2	C-101	C Block & First Floor	77 Sq.m	II ECE(B) classroom	LCD,Projector/ wifi
3	C-102	C Block & First Floor	77 Sq.m	II ECE (C) classroom	LCD,Projector/ wifi
4	B-203	B Block & Second Floor	77 Sq.m	IV ECE (C) classroom	LCD,Projector/ wifi
5	B-202	B Block & Second Floor	77 Sq.m	IV ECE(B) classroom	LCD,Projector/ wifi
6	B-205	B Block & Second Floor	77 Sq.m	IV ECE(A) classroom	LCD,Projector/ wifi
7	C-201	C Block & Second Floor	40 Sq.m	Tutorial classroom-II	wifi
8	C-204	C Block & second Floor	77 Sq.m	Tutorial classroom-II	/ wifi
9	C-202	C Block & Second Floor	77 Sq.m	III ECE(B) classroom	LCD,Projector/ wifi
10	C-203	C Block & Second Floor	77 Sq.m	III ECE(C) classroom	LCD,Projector/ wifi
11	C-103	C Block & first Floor	77 Sq.m	III ECE(A) classroom	LCD,Projector/ wifi


PRINCIPAL
Sri Indu Institute of Engineering & Tech
Shankarapur, Anaparthi Road,
S.R. Dist. Telangana 507 510



Laboratory Rooms

Sl. No	Room No	Block & Floor	Area in Sq.M	Purpose	Teaching aids available like LCD/ Wifi/LAN Facilities
1	C-002	C Block & Ground Floor	77 Sq.m	DSP, BS lab-II, VLSI & ECAD lab	WIFI/ LAN
2	A-113	A Block & First Floor	77 Sq.m	EDC lab-I,ECA & AE lab	WIFI/LAN
3	A-114	A Block & First Floor	77 Sq.m	EDC lab-II & DICA lab	WIFI/LAN
4	A-116	A Block & First Floor	77 Sq.m	MWE lab	WIFI/ LAN
5	A-117	A Block & First Floor	77 Sq.m	MPMC lab-I	WIFI/LAN
6	A-118	A Block & First Floor	77 Sq.m	BS lab-I	WIFI/LAN
7	A-119	A Block & First Floor	77 Sq.m	MPMC lab-II	WIFI/ LAN
8	B-306(A)	B Block & Third Floor	77 Sq.m	ICA lab & LICA lab	WIFI/LAN
9	B-306(B)	B Block & Third Floor	77 Sq.m	PDC lab	WIFI/LAN
10	A-313	A Block & Third Floor	77 Sq.m	DE, AC & DC lab-II, DSD & CO lab	WIFI/ LAN
11	A-314	A Block & Third Floor	77 Sq.m	AC & DC lab-I,DC lab	WIFI/ LAN



Sri Indu Institute of Engineering & Technology

Recognized Under 2(f) of UGC Act 1956
Approved by AICTE, New Delhi
Affiliated to JNTUH, Hyderabad.

Department of Humanities & Sciences

Class Rooms:

The Humanities and Sciences department has 10 class rooms for teaching and learning in which 4 class rooms are equipped with ICT enabled facilities such as LCD projectors, smart interactive board and Wi-Fi. Class room is equipped with smart interactive boards and multimedia facilities. This department is multi-disciplinary in nature with faculty belonging to different disciplines namely English, Mathematics, Physics, Chemistry and Environmental Studies. The Humanities and Sciences department plays a vital role in guiding the budding engineering graduates so that they have a smooth transition from 10+2 level to the study of engineering and technology.

Laboratories:

There are 12 Laboratories in the department and the laboratories are equipped with adequate number of laboratory equipments. Students are allowed to carry out mini projects and major projects in the respective laboratories in different time slots.

Seminar Hall:

The College provides one spacious seminar with a varied seating capacity of 150 to 200 people. Having captivating ambience and all technical facilities, seminar halls are used for various purposes like guest lectures, workshops, student meetings, staff meetings, placement drives, Faculty Development Programs etc.

Computing Equipments:

The institution has adequate number of computers, laptops, printers, scanners, servers, CC cameras to facilitate computing and internet browsing and surveillance.

Internet and WI-FI:

The institution is completely enabled with Wi-Fi facility and the institution has upgraded its internet speed to 100 Mbps through leased line

Library:

H&S Department's library contains various text and reference book to cater the needs of our faculty members and students. It also comprises of International and National Journals and magazines, various question banks and previous year question papers.



PRINCIPAL
Sri Indu Institute of Engineering & Tech.
Sherguda(V), Ibrahimpetnam(VI),
R.R. Dist. Telangana - 501 512



Sri Indu Institute of Engineering & Technology

Recognized Under 2(f) of UGC Act 1956
Approved by AICTE, New Delhi
Affiliated to JNTUH, Hyderabad.

Class Rooms

Sl. No	Room No	Block & Floor	Area in Sq.M	Purpose	Teaching aids available like LCD/ Wifi/LAN Facilities
1	D-107	D Block & First Floor	77Sq.m	I-CSE-A	LCD,Projector/ wifi
2	D-109	D Block & First Floor	77Sq.m	I-CSE-C	LCD,Projector/ wifi
3	D-208	D Block & Second Floor	77Sq.m	I-ECE-A	LCD,Projector/ wifi
4	D-209	D Block & Second Floor	77Sq.m	I-ECE-B	wifi
5	D-210	D Block & Second Floor	77Sq.m	I-ECE-C	wifi
6	D-108	D Block & First Floor	77Sq.m	I-CSE-B	LCD,Projector/ wifi
7	D-104	D Block & First Floor	77Sq.m	I-CIVIL (A)	wifi
8	D-105	D Block & first Floor	77Sq.m	I-IOT (A)	wifi
9	D-110	D Block & First Floor	77Sq.m	I-AIML (A)	wifi
10	D-207	D Block & second Floor	77Sq.m	I-CS	wifi


PRINCIPAL
Sri Indu Institute of Engineering & Tech,
Srienguda(V), Ibrahimpatnam(M),
R.R. Dist. Telangana -501 510



Sri Indu Institute of Engineering & Technology

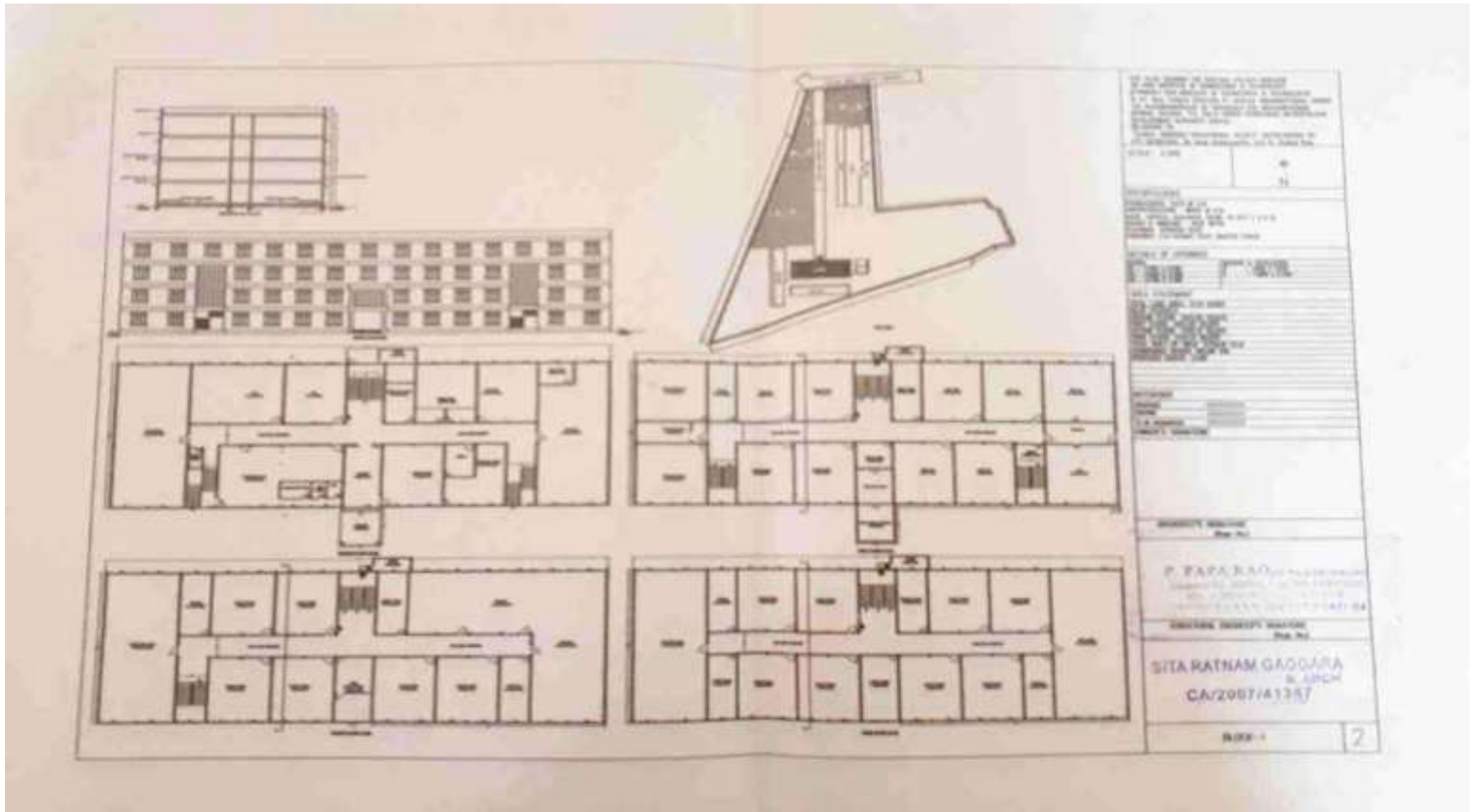
Recognized Under 2(f) of UGC Act 1956
Approved by AICTE, New Delhi
Affiliated to JNTUH, Hyderabad.

Laboratory Rooms

Sl. No	Room No	Block & Floor	Area in Sq.M	Purpose	Teaching aids available like LCD/ Wifi/LAN Facilities
1	A-018	A Block & Ground Floor	77Sq.m	AECS lab	WIFI/ LAN
2	A-019	A Block & Ground Floor	77Sq.m	AECS lab	WIFI/LAN
3	A-005	A Block & Ground Floor	220Sq.m	BEE LAB-1	WIFI/LAN
4	A-305	A Block & Third Floor	220Sq.m	Drawing Lab	WIFI/ LAN
5	B-201	B Block & Third Floor	117Sq.m	Physics lab	WIFI/ LAN
6	D-106	D Block & First Floor	90Sq.m	Physics lab	WIFI/ LAN
7	B-104	B Block & First Floor	170Sq.m	Chemistry lab	WIFI/ LAN
8	D-103	D Block & First Floor	90Sq.m	Chemistry lab	WIFI/ LAN
9	D-012	D Block & Ground Floor	77Sq.m	ELCS lab	WIFI/ LAN
10	D-011	D Block & Ground Floor	77Sq.m	ELCS lab	WIFI/ LAN
11	D-305	D Block & 3rd Floor	77Sq.m	Drawing hall	WIFI/ LAN
12	A-007	A Block & ground floor	220sq.m	BEE lab-2	WIFI/ LAN

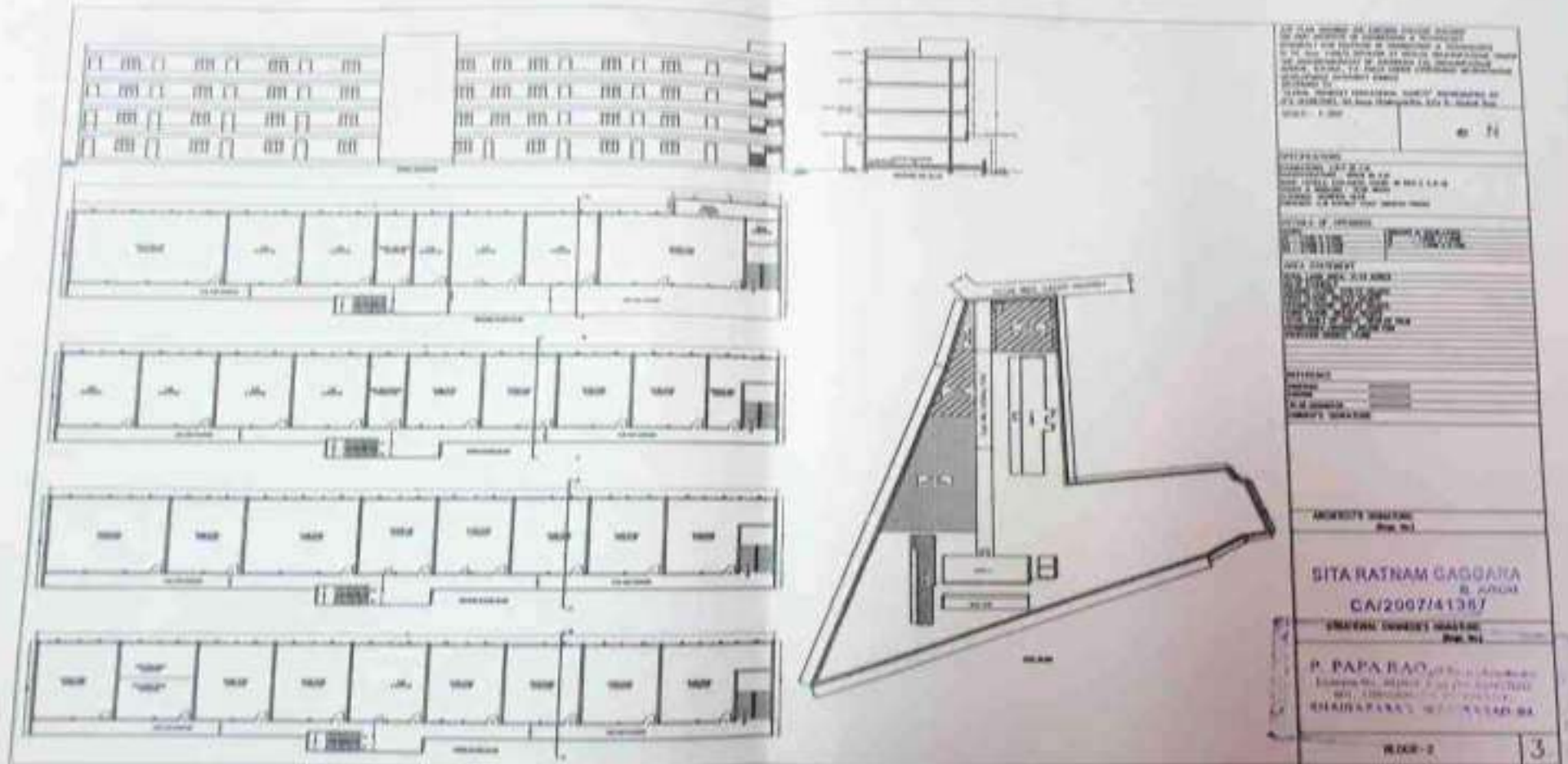

PRINCIPAL
Sri Indu Institute of Engineering & Tech,
Gheruguda(V), Ibrahimpatnam(M),
R.R. Dist. Telangana -501 510

A Block – Building Plan




PRINCIPAL
Sri Indu Institute of Engineering & Tech.
Bharguda(V), Ibrahimpatnam(M),
R.R. Dist. Telangana - 501 510

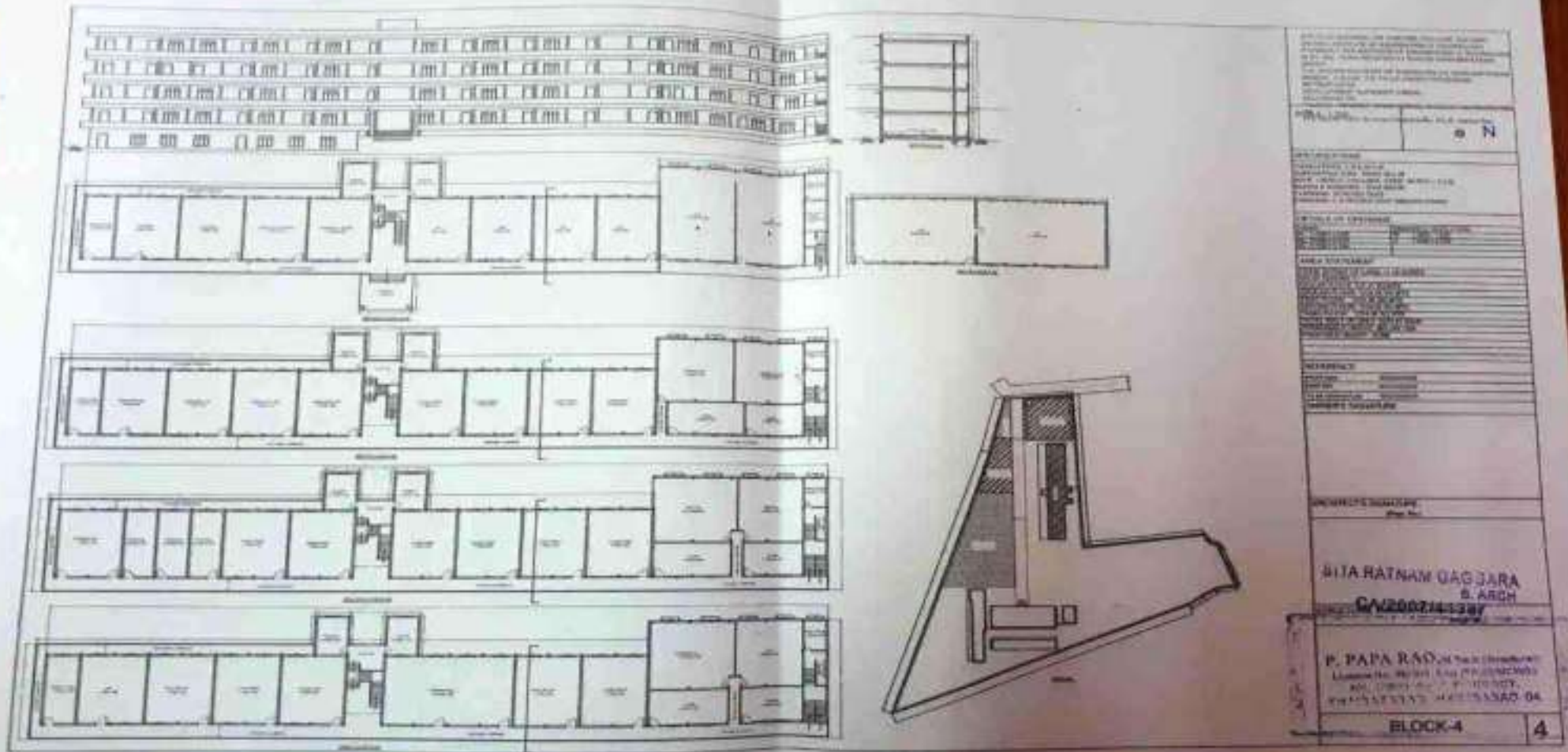
B Block – Building Plan



<p>FOR THE PURPOSE OF THE BUILDING ACT, 1956 AND THE BUILDING REGULATIONS, 1957, THE ARCHITECT HAS PREPARED A BUILDING PLAN FOR THE CONSTRUCTION OF THE BUILDING DESCRIBED IN THE SCHEDULED PART OF THE BUILDING PLAN. THE ARCHITECT HAS NOT BEEN ADVISED BY THE APPLICANT THAT THE BUILDING IS TO BE USED FOR ANY OTHER PURPOSE THAN THAT SPECIFIED IN THE SCHEDULED PART OF THE BUILDING PLAN.</p> <p>DATE: 10/10/2017</p>	
<p>PROFESSIONAL SEAL AND SIGNATURE OF ARCHITECT</p>	
<p>NAME OF ARCHITECT</p>	
<p>REGISTERED NUMBER</p>	
<p>ADDRESS</p>	
<p>DATE OF SIGNATURE</p>	
<p>ARCHITECT'S SIGNATURE</p>	
<p>SITA RATNAM GAGGARU No. 10/10/2017 CA/2007/41367</p>	
<p>ENGINEER'S SIGNATURE</p>	
<p>P. PAPA RAO, P.E. License No. 10/10/2017 No. 10/10/2017 CHAIDAPARA, HYDRABAD-501 510</p>	
<p>NO. OF 2</p>	<p>3</p>


 PRINCIPAL
 Sri Indu Institute of Engineering & Tech.
 Sherguda(V), Ibrahimpatnam(MQ),
 R.R. Dist. Telangana -501 510

D Block – Building Plan




 PRINCIPAL
 Sri Indu Institute of Engineering & Tech.
 Bharguda(V), Bhalasatnam(M),
 R.R. Dist. Telangana -501 510

5087

SCANNED

SD68 b6. (14)

U No. 5068/2006



ఆంధ్రప్రదేశ్ ఆంధ్ర ప్రదేశ్ ANDHRA PRADESH

05AA 333667

స. నం. 05AA 333667

ఈ డి. ఎ. వారికి దండం చేసినది గురించి తెలియజేయబడినది

శ్రీ. వీరయ్య

స్టాంపు వెంకట్

GIFT SETTLEMENT DEED
(For Charitable Purpose)

No 3/88, Re No 10/2008,

This Deed of Gift Settlement is made and executed on this 29th day of March 2006 at Ibrahimpatan, by:

“NEW LOYOLA MODEL EDUCATION SOCIETY” Red.No:851/79 at Vanasthalipuram, Rep by It's Secretary & Correspondent Mr.R.VENKAT RAO S/o R.MALLA RAO, Aged: 54 yrs, R/o Vanasthalipuram, R.R.Dist....

(Hereinafter called the Donor/Settler which term shall mean and include all it's heirs, Successors, administrators, assigns etc of One Part)

IN FAVOUR OF

“GLOBAL TRENDSET EDUCATIONAL SOCIETY’ Red.No:122/2006 at Vanasthalipuram, Rep by It's General Secretary Mr.ANUP CHAKRAVARTHY S/o R.VENKAT RAO, Aged:25 yrs, R/o Vanasthalipuram, R.R.Dist....

(Hereinafter called the Donee/Settlee which term shall mean and include all it's Present and future Trustees, Successors-in-interest, administrators, assigns etc of the Other Part)

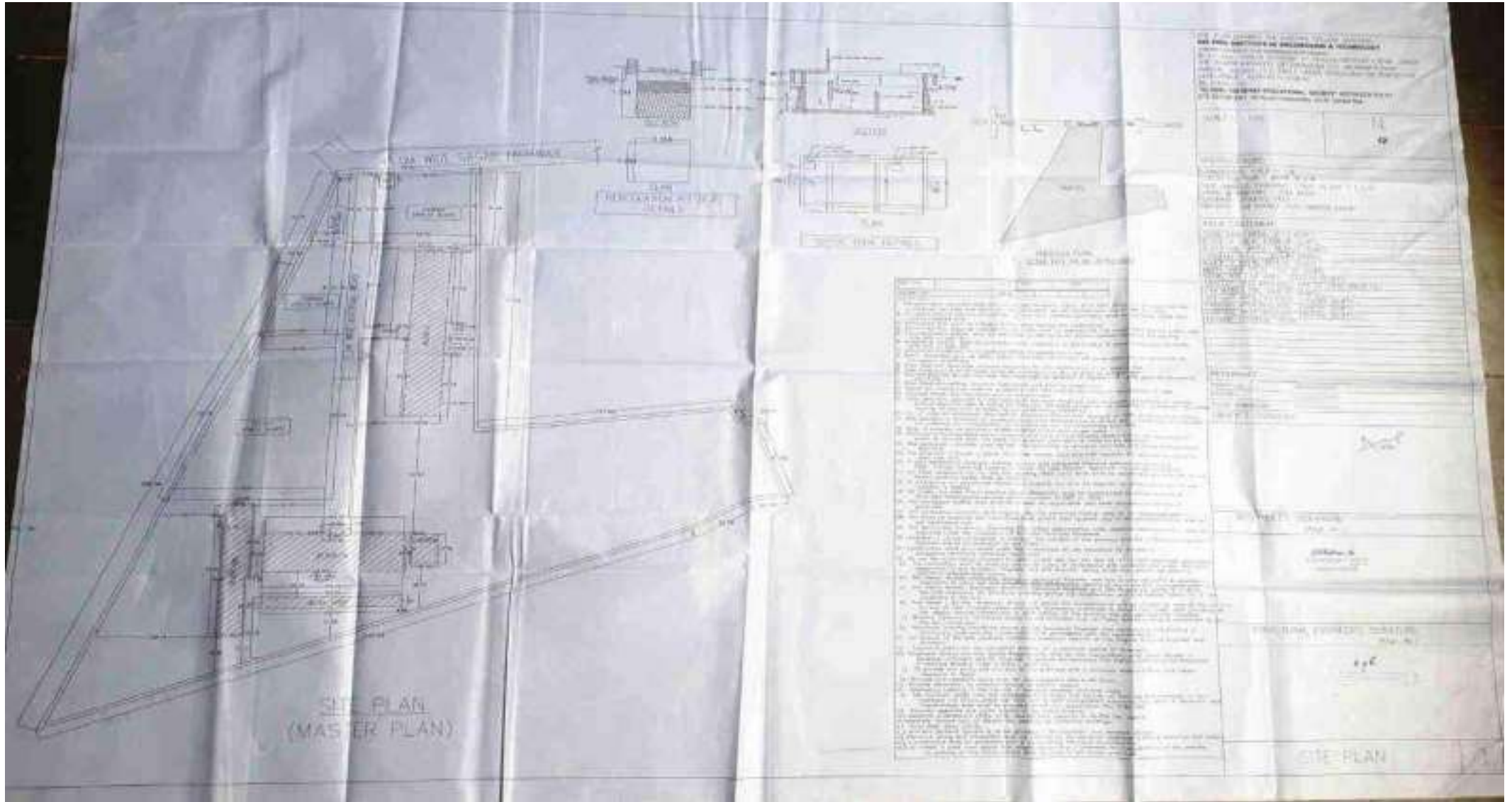
Contd:2

RR

1168/0

11.14

Master Plan of the Campus




PRINCIPAL
Sri Indu Institute of Engineering & Tech.
Sherguda(V), Ibrahimpatnam(M),
R.R. Dist. Telangana -501 510



Sri Indu Institute of Engineering & Technology

Recognized Under 2(f) of UGC Act 1956
Approved by AICTE, New Delhi
Affiliated to JNTUH, Hyderabad.

DEPARTMENT OF MECHONICAL ENGINEERING LABORATORY&WORK SHOP PHOTOS

CAD-CAM




PRINCIPAL
Sri Indu Institute of Engineering & Tech
Sangareddy(V), Ibrahimpatnam(M),
R.R. Dist. Telangana - 501 510



Sri Indu Institute of Engineering & Technology

Recognized Under 2(f) of UGC Act 1956
Approved by AICTE, New Delhi
Affiliated to JNTUH, Hyderabad.

ENGINEERING WORK SHOP PHOTOS




PRINCIPAL
Sri Indu Institute of Engineering & Tech
Sherguda(V), Ibrahimpatnam(M),
R.R. Dist. Telangana -501 510



Sri Indu Institute of Engineering & Technology

Recognized Under 2(f) of UGC Act 1956
Approved by AICTE, New Delhi
Affiliated to JNTUH, Hyderabad.



FLUID MECHANICS AND HYDRAULIC MACHINES LAB

FM & FM WORK SHOP PHOTOS




PRINCIPAL
Sri Indu Institute of Engineering & Tech
Sherguda(V), Ibrahimpatnam(M),
R.R. Dist. Telangana -501 510



Sri Indu Institute of Engineering & Technology

Recognized Under 2(f) of UGC Act 1956
Approved by AICTE, New Delhi
Affiliated to JNTUH, Hyderabad.

FM & FM



FM & FM




PRINCIPAL
Sri Indu Institute of Engineering & Tech,
Sheriguda(V), Ibrahimpatnam(M),
R.R. Dist. Telangana -501 510



Sri Indu Institute of Engineering & Technology

Recognized Under 2(f) of UGC Act 1956
Approved by AICTE, New Delhi
Affiliated to JNTUH, Hyderabad.

HEAT TRANSFER LAB




PRINCIPAL
Sri Indu Institute of Engineering & Tech
Sherguda(V), Ibrahimpatnam(M),
R.R. Dist. Telangana -501 510



Sri Indu Institute of Engineering & Technology

Recognized Under 2(f) of UGC Act 1956
Approved by AICTE, New Delhi
Affiliated to JNTUH, Hyderabad.



INSTRUMENTATION AND CONTROL SYSTEMS LAB PHOTOS




PRINCIPAL
Sri Indu Institute of Engineering & Tech
Sherguda(V), Ibrahimpatnam(M),
R.R. Dist. Telangana -501 510



Sri Indu Institute of Engineering & Technology

Recognized Under 2(f) of UGC Act 1956
Approved by AICTE, New Delhi
Affiliated to JNTUH, Hyderabad.



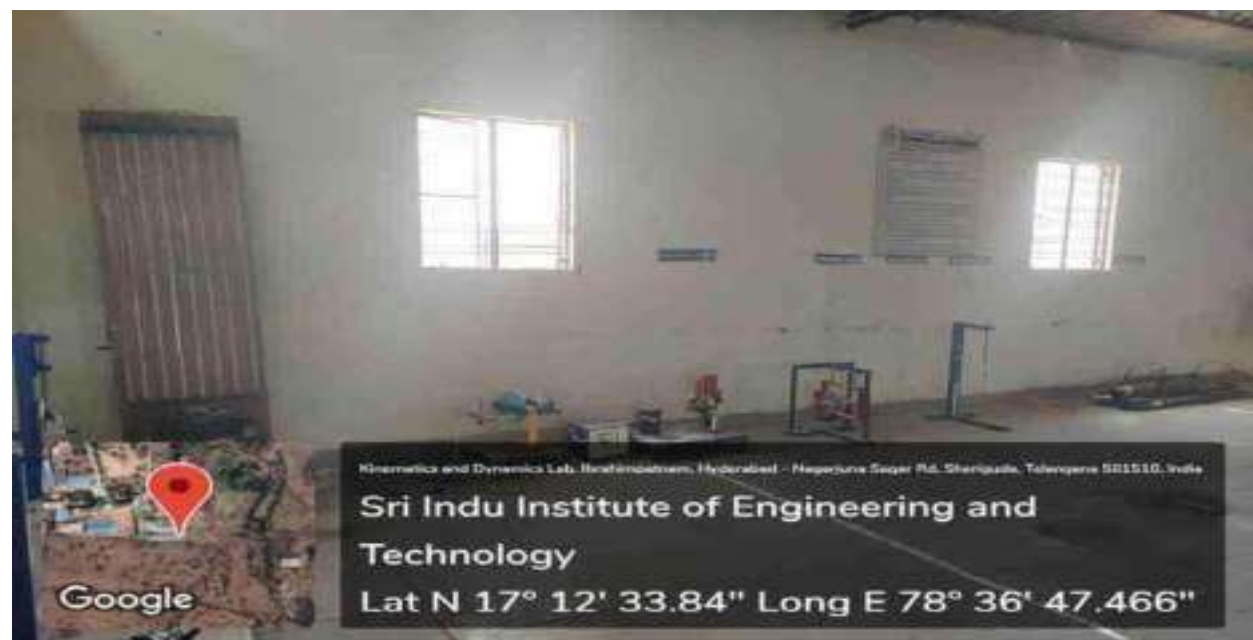

PRINCIPAL
Sri Indu Institute of Engineering & Tech
Gharguda(V), Ibrahimpatnam(M),
R.R. Dist. Telangana -501 510



Sri Indu Institute of Engineering & Technology

Recognized Under 2(f) of UGC Act 1956
Approved by AICTE, New Delhi
Affiliated to JNTUH, Hyderabad.

KINEMATICS & DYNAMICS LAB PHOTOS

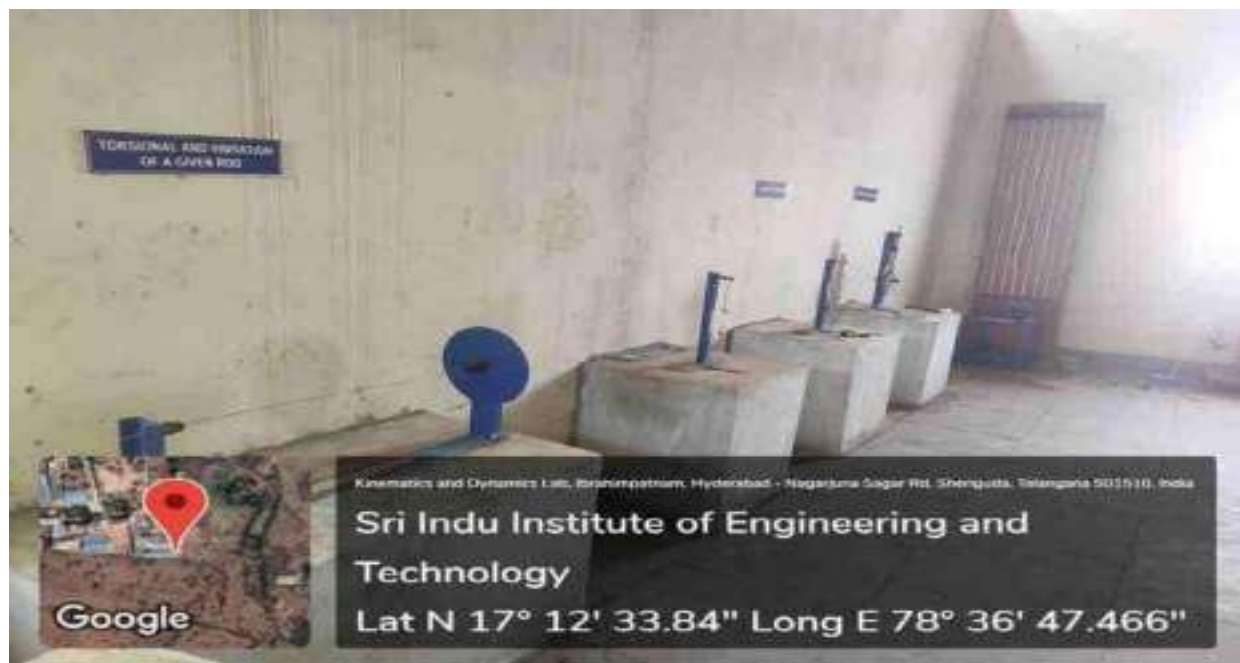



PRINCIPAL
Sri Indu Institute of Engineering & Tech,
Sherguda(V), Ibrahimpatnam(M),
R.R. Dist. Telangana -501 510



Sri Indu Institute of Engineering & Technology

Recognized Under 2(f) of UGC Act 1956
Approved by AICTE, New Delhi
Affiliated to JNTUH, Hyderabad.




PRINCIPAL
Sri Indu Institute of Engineering & Tech
Sherguda(V), Ibrahimpatnam(M),
R.R. Dist. Telangana -501 510



Sri Indu Institute of Engineering & Technology

Recognized Under 2(f) of UGC Act 1956
Approved by AICTE, New Delhi
Affiliated to JNTUH, Hyderabad.

MACHINE DRAWING PRACTICE




PRINCIPAL
Sri Indu Institute of Engineering & Tech
Sherguda(V), Ibrahimpatnam(M),
R.R. Dist. Telangana -501 510



Sri Indu Institute of Engineering & Technology

Recognized Under 2(f) of UGC Act 1956
Approved by AICTE, New Delhi
Affiliated to JNTUH, Hyderabad.



MATERIAL SCIENCE AND MECHANICS OF SOLIDS LAB




PRINCIPAL
Sri Indu Institute of Engineering & Tech,
Serilinguda(V), Serilingampalem(M),
R.R. Dist, Telangana -501 510



Sri Indu Institute of Engineering & Technology

Recognized Under 2(f) of UGC Act 1956
Approved by AICTE, New Delhi
Affiliated to JNTUH, Hyderabad.



PRINCIPAL
Sri Indu Institute of Engineering & Tech,
Sherguda(V), Srirampatnam(M),
R.R. Dist. Telangana -501 510



Sri Indu Institute of Engineering & Technology

Recognized Under 2(f) of UGC Act 1956
Approved by AICTE, New Delhi
Affiliated to JNTUH, Hyderabad.

METROLOGY & MACHINE TOOLS LAB




PRINCIPAL
Sri Indu Institute of Engineering & Tech
Sherguda(V), Ibrahimpatnam(M),
R.R. Dist. Telangana -501 510



Sri Indu Institute of Engineering & Technology

Recognized Under 2(f) of UGC Act 1956
Approved by AICTE, New Delhi
Affiliated to JNTUH, Hyderabad.



PRODUCTION TECHNOLOGY LAB



PRINCIPAL
Sri Indu Institute of Engineering & Tech,
Sherquda(V), Ibrahimpatnam(M),
R.R. Dist, Telangana - 501 510



Sri Indu Institute of Engineering & Technology

Recognized Under 2(f) of UGC Act 1956
Approved by AICTE, New Delhi
Affiliated to JNTUH, Hyderabad.



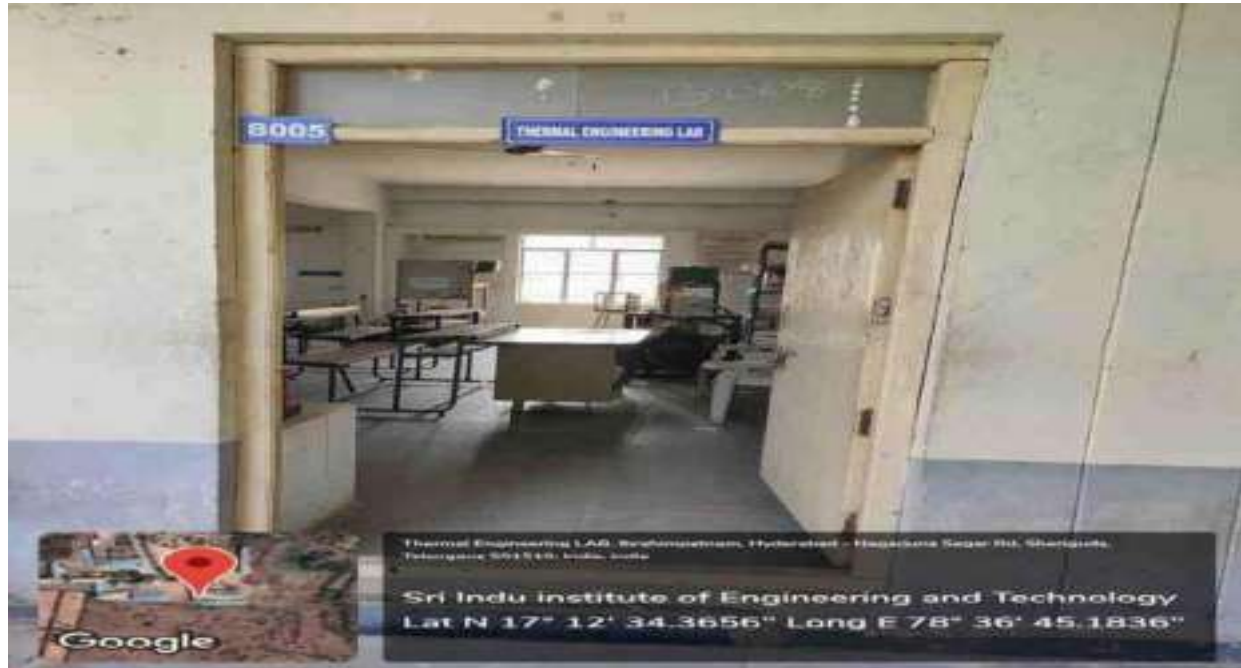

PRINCIPAL
Sri Indu Institute of Engineering & Tech
Bhonguda(V), Ibrahimpatnam(M),
R.R. Dist. Telangana - 501 510



Sri Indu Institute of Engineering & Technology

Recognized Under 2(f) of UGC Act 1956
Approved by AICTE, New Delhi
Affiliated to JNTUH, Hyderabad.

THERMAL ENGINEERING LAB




PRINCIPAL
Sri Indu Institute of Engineering & Tech.
Sherguda(V), Ibrahimpatnam(M),
R.R. Dist. Telangana - 501 510



Sri Indu Institute of Engineering & Technology

Recognized Under 2(f) of UGC Act 1956
Approved by AICTE, New Delhi
Affiliated to JNTUH, Hyderabad.



DEPARTMENT OF CIVIL ENGINEERING LABORATORY PHOTOS




PRINCIPAL
Sri Indu Institute of Engineering & Tech.
Sherguda(V), Ibrahimpatnam(M),
R.R. Dist. Telangana -501 510



Sri Indu Institute of Engineering & Technology

Recognized Under 2(f) of UGC Act 1956
Approved by AICTE, New Delhi
Affiliated to JNTUH, Hyderabad.



[Handwritten Signature]
PRINCIPAL
Sri Indu Institute of Engineering & Tech.
Sheriguda(V), Ibrahimpatnam(M),
R.R. Dist. Telangana -501 510



Sri Indu Institute of Engineering & Technology

Recognized Under 2(f) of UGC Act 1956
Approved by AICTE, New Delhi
Affiliated to JNTUH, Hyderabad.



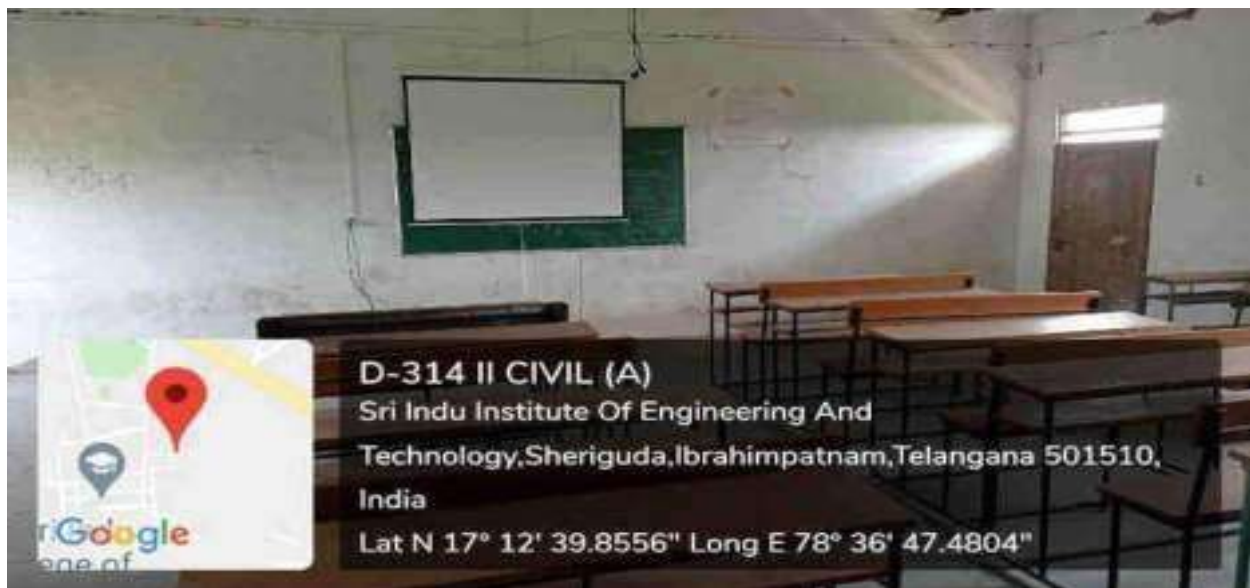

PRINCIPAL
Sri Indu Institute of Engineering & Tech.
Sheriguda(V), Ibrahimpatnam(M),
R.R. Dist. Telangana -501510



Sri Indu Institute of Engineering & Technology

Recognized Under 2(f) of UGC Act 1956
Approved by AICTE, New Delhi
Affiliated to JNTUH, Hyderabad.

DEPARTMENT OF CIVIL ENGINEERING CLASS ROOM PHOTOS




PRINCIPAL
Sri Indu Institute of Engineering & Tech.
Sheriguda(V), Ibrahimpatnam(M),
R.R. Dist. Telangana - 501 510



Sri Indu Institute of Engineering & Technology

Recognized Under 2(f) of UGC Act 1956
Approved by AICTE, New Delhi
Affiliated to JNTUH, Hyderabad.




PRINCIPAL
Sri Indu Institute of Engineering & Tech.
Sherguda(V), Ibrahimpatnam(M),
R.R. Dist. Telangana -501 510



Sri Indu Institute of Engineering & Technology

Recognized Under 2(f) of UGC Act 1956
Approved by AICTE, New Delhi
Affiliated to JNTUH, Hyderabad.




PRINCIPAL
Sri Indu Institute of Engineering & Tech.
Sheriguda(V), Ibrahimpatnam(M),
R.R. Dist. Telangana -501 510



Sri Indu Institute of Engineering & Technology

Recognized Under 2(f) of UGC Act 1956
Approved by AICTE, New Delhi
Affiliated to JNTUH, Hyderabad.



D-306 IV CIVIL (B)
Sri Indu Institute Of Engineering And
Technology, Sheriguda, Ibrahimpatnam, Telangana
501510, India
Lat N 17° 12' 38.6568" Long E 78° 36' 47.79"



D-308 III- CIVIL (B)
Sri Indu Institute Of Engineering And
Technology, Sheriguda, Ibrahimpatnam, Telangana
501510, India
Lat N 17° 12' 38.3652" Long E 78° 36' 47.4444"


PRINCIPAL
Sri Indu Institute of Engineering & Tech.
Sheriguda(V), Ibrahimpatnam(M),
R.R. Dist. Telangana -501 510



Sri Indu Institute of Engineering & Technology

Recognized Under 2(f) of UGC Act 1956
Approved by AICTE, New Delhi
Affiliated to JNTUH, Hyderabad.



D-308 III CIVIL (B)
Sri Indu Institute Of Engineering And
Technology, Sheriguda, Ibrahimpatnam, Telangana 501510,
India
Lat N 17° 12' 38.5344" Long E 78° 36' 47.0376"



D-307 IV-CIVIL (A)
Sri Indu Institute Of Engineering And
Technology, Sheriguda, Ibrahimpatnam, Telangana
501510, India
Lat N 17° 12' 38.502" Long E 78° 36' 47.8556"


PRINCIPAL
Sri Indu Institute of Engineering & Tech.
Sheriguda(V), Ibrahimpatnam(M),
R.R. Dist. Telangana -501 510



Sri Indu Institute of Engineering & Technology

Recognized Under 2(f) of UGC Act 1956
Approved by AICTE, New Delhi
Affiliated to JNTUH, Hyderabad.



D-307 IV CIVIL (A)
Sri Indu Institute Of Engineering And
Technology, Sheriguda, Ibrahimpatnam, Telangana 501510,
India
Lat N 17° 12' 38.5164" Long E 78° 36' 47.0736"


PRINCIPAL
Sri Indu Institute of Engineering & Tech.
Sheriguda(V), Ibrahimpatnam(M),
R.R. Dist. Telangana - 501 510



Sri Indu Institute of Engineering & Technology

Recognized Under 2(f) of UGC Act 1956
Approved by AICTE, New Delhi
Affiliated to JNTUH, Hyderabad.

DEPARTMENT OF COMPUTER SCIENCE ENGINEERING CLASS ROOM PHOTOS




PRINCIPAL
Sri Indu Institute of Engineering & Tech.
Sheriguda(V), Ibrahimpatnam(M),
R.R. Dist. Telangana -501 510.



Sri Indu Institute of Engineering & Technology

Recognized Under 2(f) of UGC Act 1956
Approved by AICTE, New Delhi
Affiliated to JNTUH, Hyderabad.



Sheriguda, Telangana, India

SRI INDU INSTITUTE OF ENGINEERING AND TECHNOLOGY, A BLOCK IV CSE A
Ibrahimpatnam, Hyderabad - Nagarjuna Sagar Rd, Sheriguda, Telangana 501510, India
Lat N 17° 12' 35.1072"
Long E 78° 36' 46.512"
07/04/21 01:50 PM



Sheriguda, Telangana, India

SRI INDU INSTITUTE OF ENGINEERING AND TECHNOLOGY, BLOCK A B CSE C,
Ibrahimpatnam, Hyderabad - Nagarjuna Sagar Rd, Sheriguda, Telangana 501510, India
Lat N 17° 12' 35.1072"
Long E 78° 36' 46.512"
07/04/21 01:56 PM


PRINCIPAL
Sri Indu Institute of Engineering & Tech.
Sheriguda(V), Ibrahimpatnam(M),
R.R. Dist. Telangana -501 510.



Sri Indu Institute of Engineering & Technology

Recognized Under 2(f) of UGC Act 1956
Approved by AICTE, New Delhi
Affiliated to JNTUH, Hyderabad.




PRINCIPAL
Sri Indu Institute of Engineering & Tech.
Sheriguda(V), Ibrahimpatnam(M),
R.R. Dist. Telangana -501 510



Sri Indu Institute of Engineering & Technology

Recognized Under 2(f) of UGC Act 1956
Approved by AICTE, New Delhi
Affiliated to JNTUH, Hyderabad.




PRINCIPAL
Sri Indu Institute of Engineering & Tech.
Sheriguda(V), Ibrahimpattanam(M),
R.R. Dist. Telangana -501 510



Sri Indu Institute of Engineering & Technology

Recognized Under 2(f) of UGC Act 1956
Approved by AICTE, New Delhi
Affiliated to JNTUH, Hyderabad.



DEPARTMENT OF COMPUTER SCIENCE ENGINEERING LABORATORY PHOTOS




PRINCIPAL
Sri Indu Institute of Engineering & Tech.
Sheriguda(V), Ibrahimpatnam(M),
R.R. Dist. Telangana - 501 510.



Sri Indu Institute of Engineering & Technology

Recognized Under 2(f) of UGC Act 1956
Approved by AICTE, New Delhi
Affiliated to JNTUH, Hyderabad.

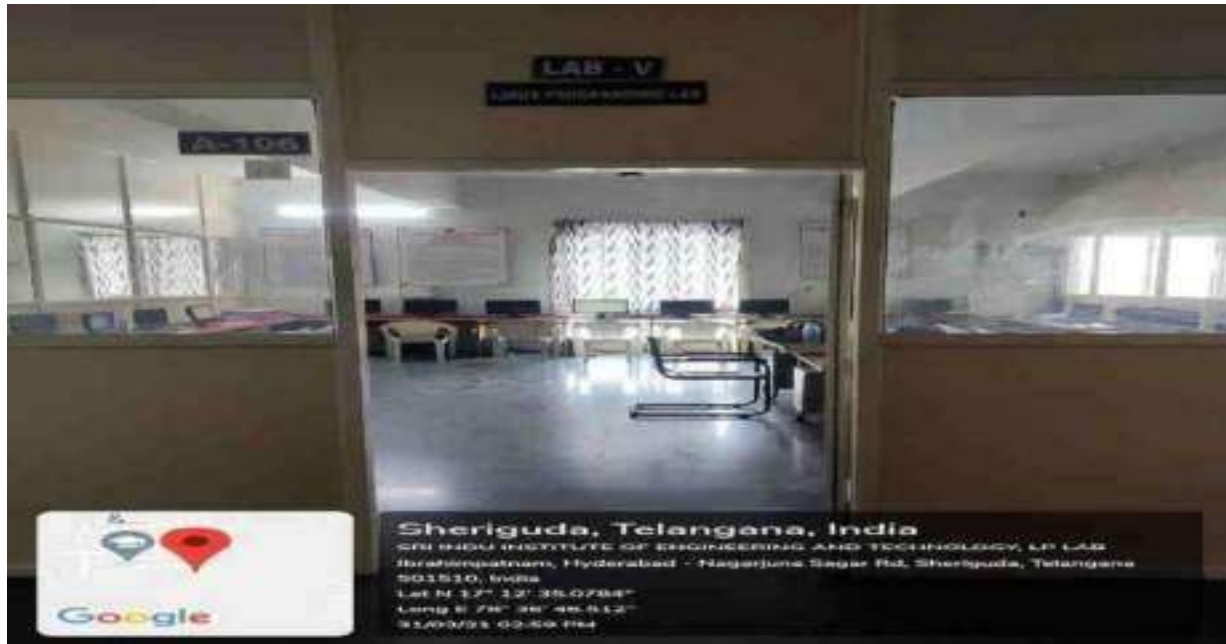



PRINCIPAL
Sri Indu Institute of Engineering & Tech.
Sheriguda(V), Ibrahimpatnam(M),
R.R. Dist. Telangana -501 510



Sri Indu Institute of Engineering & Technology

Recognized Under 2(f) of UGC Act 1956
Approved by AICTE, New Delhi
Affiliated to JNTUH, Hyderabad.

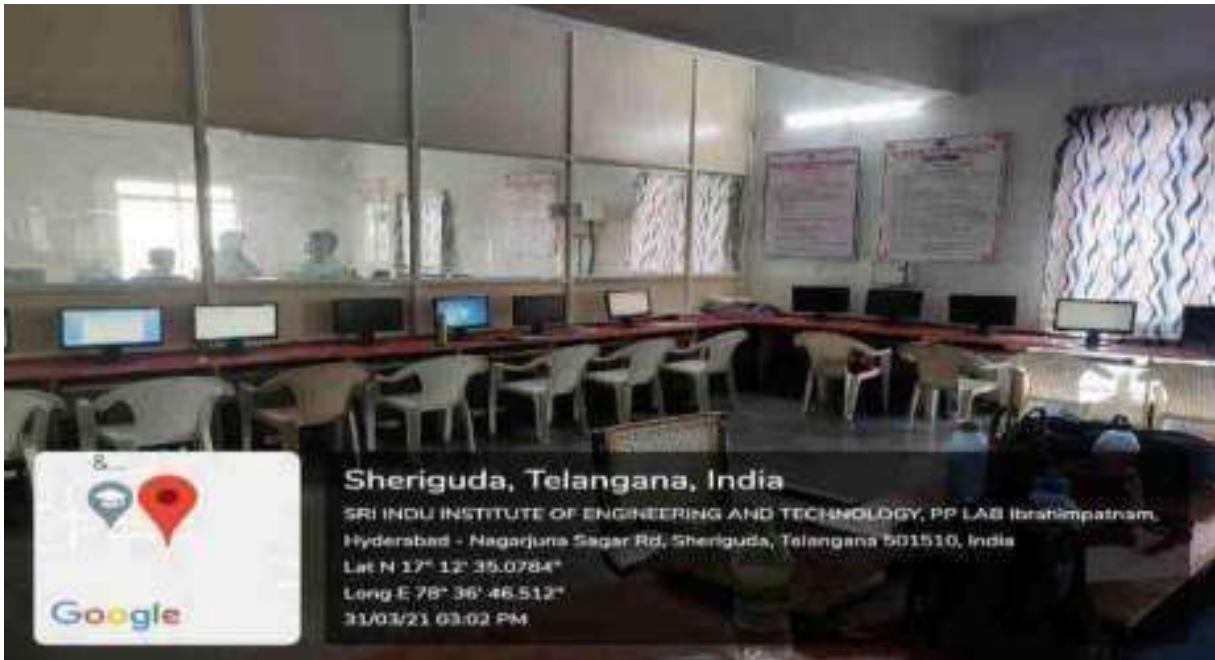



PRINCIPAL
Sri Indu Institute of Engineering & Tech.
Sheriguda(V), Ibrahimpatnam(M),
R.R. Dist. Telangana -501 510



Sri Indu Institute of Engineering & Technology

Recognized Under 2(f) of UGC Act 1956
Approved by AICTE, New Delhi
Affiliated to JNTUH, Hyderabad.




PRINCIPAL
Sri Indu Institute of Engineering & Tech.
Sheriguda(V), Ibrahimpatnam(M),
R.R. Dist. Telangana - 501 510



Sri Indu Institute of Engineering & Technology

Recognized Under 2(f) of UGC Act 1956
Approved by AICTE, New Delhi
Affiliated to JNTUH, Hyderabad.




PRINCIPAL
Sri Indu Institute of Engineering & Tech.
Sheriguda(V), Ibrahimpatnam(M),
R.R. Dist. Telangana -501 510



Sri Indu Institute of Engineering & Technology

Recognized Under 2(f) of UGC Act 1956
Approved by AICTE, New Delhi
Affiliated to JNTUH, Hyderabad.

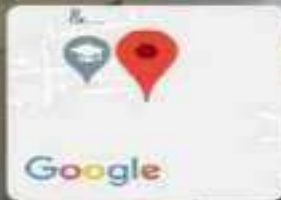



PRINCIPAL
Sri Indu Institute of Engineering & Tech.
Sheriguda(V), Ibrahimpetnam(M),
R.R. Dist. Telangana -501 510



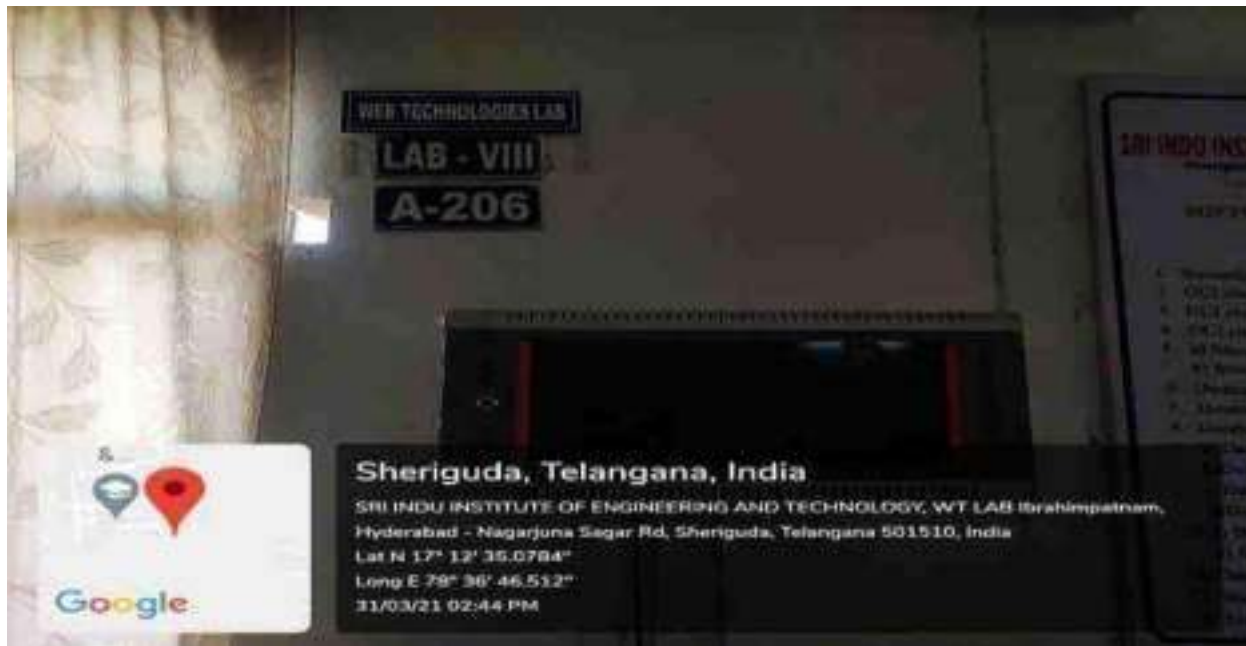
Sri Indu Institute of Engineering & Technology

Recognized Under 2(f) of UGC Act 1956
Approved by AICTE, New Delhi
Affiliated to JNTUH, Hyderabad.



Sheriguda, Telangana, India

SRI INDU INSTITUTE OF ENGINEERING AND TECHNOLOGY, DS LAB Ibrahimpatnam,
Hyderabad - Nagarjuna Sagar Rd, Sheriguda, Telangana 501510, India
Lat N 17° 12' 35.0784"
Long E 78° 36' 46.512"
31/03/21 02:20 PM



Sheriguda, Telangana, India

SRI INDU INSTITUTE OF ENGINEERING AND TECHNOLOGY, WT LAB Ibrahimpatnam,
Hyderabad - Nagarjuna Sagar Rd, Sheriguda, Telangana 501510, India
Lat N 17° 12' 35.0784"
Long E 78° 36' 46.512"
31/03/21 02:44 PM


PRINCIPAL
Sri Indu Institute of Engineering & Tech.
Sheriguda(V), Ibrahimpatnam(M),
R.R. Dist. Telangana -501 510



Sri Indu Institute of Engineering & Technology

Recognized Under 2(f) of UGC Act 1956
Approved by AICTE, New Delhi
Affiliated to JNTUH, Hyderabad.



Sheriguda, Telangana, India

SRI INDU INSTITUTE OF ENGINEERING AND TECHNOLOGY, DS LAB Ibrahimpatnam,
Hyderabad - Nagarjuna Sagar Rd, Sheriguda, Telangana 501510, India
Lat N 17° 12' 35.0784"
Long E 78° 36' 46.512"
31/03/21 02:20 PM



Sheriguda, Telangana, India

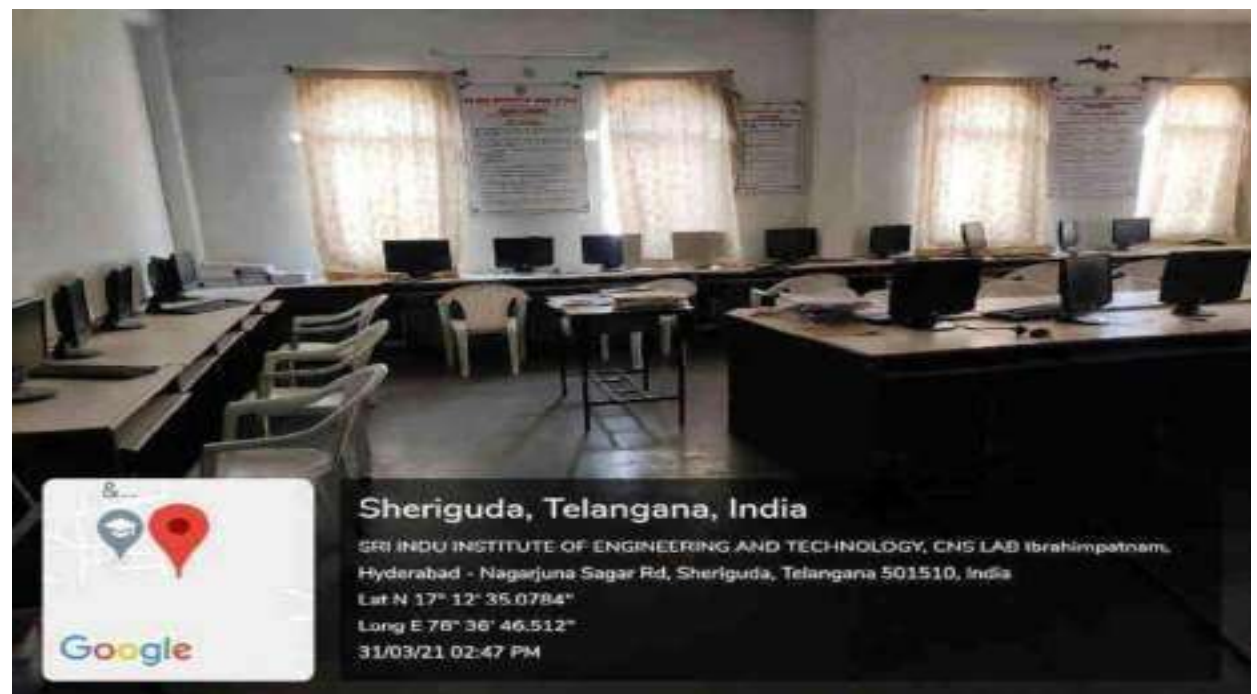
SRI INDU INSTITUTE OF ENGINEERING AND TECHNOLOGY, WT LAB Ibrahimpatnam,
Hyderabad - Nagarjuna Sagar Rd, Sheriguda, Telangana 501510, India
Lat N 17° 12' 35.0784"
Long E 78° 36' 46.512"
31/03/21 02:45 PM


PRINCIPAL
Sri Indu Institute of Engineering & Techn.
Sheriguda(V), Ibrahimpatnam(M),
R.R. Dist. Telangana -501 510



Sri Indu Institute of Engineering & Technology

Recognized Under 2(f) of UGC Act 1956
Approved by AICTE, New Delhi
Affiliated to JNTUH, Hyderabad.





PRINCIPAL
Sri Indu Institute of Engineering & Tech.
Sheriguda(V), Ibrahimpatnam(M),
R.R. Dist. Telangana -501 510



Sri Indu Institute of Engineering & Technology

Recognized Under 2(f) of UGC Act 1956
Approved by AICTE, New Delhi
Affiliated to JNTUH, Hyderabad.




PRINCIPAL
Sri Indu Institute of Engineering & Tech.
Sheriguda(V), Ibrahimpatnam(M),
R.R. Dist. Telangana - 501 510



Sri Indu Institute of Engineering & Technology

Recognized Under 2(f) of UGC Act 1956
Approved by AICTE, New Delhi
Affiliated to JNTUH, Hyderabad.



PRINCIPAL
Sri Indu Institute of Engineering & Tech.
Sheriguda(V), Ibrahimpattam(M),
R.R. Dist. Telangana -501 510



Sri Indu Institute of Engineering & Technology

Recognized Under 2(f) of UGC Act 1956
Approved by AICTE, New Delhi
Affiliated to JNTUH, Hyderabad.





PRINCIPAL
Sri Indu Institute of Engineering & Tech.
Sheriguda(V), Ibrahimpatnam(M),
R.R. Dist. Telangana -501 510



Sri Indu Institute of Engineering & Technology

Recognized Under 2(f) of UGC Act 1956
Approved by AICTE, New Delhi
Affiliated to JNTUH, Hyderabad.




PRINCIPAL
Sri Indu Institute of Engineering & Tech.
Sheriguda(V), Ibrahimpatnam(M),
R.R. Dist. Telangana -501 510



Sri Indu Institute of Engineering & Technology

Recognized Under 2(f) of UGC Act 1956
Approved by AICTE, New Delhi
Affiliated to JNTUH, Hyderabad.




PRINCIPAL
Sri Indu Institute of Engineering & Tech.
Sheriguda(V), Ibrahimpetnam(M),
R.R. Dist. Telangana - 501 510



Sri Indu Institute of Engineering & Technology

Recognized Under 2(f) of UGC Act 1956
Approved by AICTE, New Delhi
Affiliated to JNTUH, Hyderabad.




PRINCIPAL
Sri Indu Institute of Engineering & Tech.
Sheriguda(V), Ibrahimpatnam(M),
R.R. Dist. Telangana -501 510



Sri Indu Institute of Engineering & Technology

Recognized Under 2(f) of UGC Act 1956
Approved by AICTE, New Delhi
Affiliated to JNTUH, Hyderabad.



Sheriguda, Telangana, India

SRI INDU INSTITUTE OF ENGINEERING AND TECHNOLOGY, DBMS LAB Ibrahimpatnam,
Hyderabad - Nagarjuna Sagar Rd, Sheriguda, Telangana 501510, India
Lat N 17° 12' 35.0784"
Long E 78° 36' 46.512"
31/03/21 02:23 PM



Sheriguda, Telangana, India

SRI INDU INSTITUTE OF ENGINEERING AND TECHNOLOGY, DS LAB
Ibrahimpatnam, Hyderabad - Nagarjuna Sagar Rd, Sheriguda, Telangana
501510, India
Lat N 17° 12' 35.0784"
Long E 78° 36' 46.512"
31/03/21 02:21 PM


PRINCIPAL
Sri Indu Institute of Engineering & Tech.
Sheriguda(V), Ibrahimpatnam(M),
R.R. Dist. Telangana - 501 510



Sri Indu Institute of Engineering & Technology

Recognized Under 2(f) of UGC Act 1956
Approved by AICTE, New Delhi
Affiliated to JNTUH, Hyderabad.



Sheriguda, Telangana, India

SRI INDU INSTITUTE OF ENGINEERING AND TECHNOLOGY, CINS LAB
Ibrahimpatnam, Hyderabad - Nagarjuna Sagar Rd, Sheriguda, Telangana
501510, India
Lat N 17° 12' 35.0764"
Long E 78° 36' 46.512"
31/03/21 02:45 PM



Sheriguda, Telangana, India

SRI INDU INSTITUTE OF ENGINEERING AND TECHNOLOGY, PP LAB
Ibrahimpatnam, Hyderabad - Nagarjuna Sagar Rd, Sheriguda, Telangana
501510, India
Lat N 17° 12' 35.0764"
Long E 78° 36' 46.512"
31/03/21 03:02 PM


PRINCIPAL
Sri Indu Institute of Engineering & Tech.
Sheriguda(V), Ibrahimpatnam(M),
R.R. Dist. Telangana -501 510



Sri Indu Institute of Engineering & Technology

Recognized Under 2(f) of UGC Act 1956
Approved by AICTE, New Delhi
Affiliated to JNTUH, Hyderabad.




PRINCIPAL
Sri Indu Institute of Engineering & Tech.
Sheriguda(V), Ibrahimpattanam(M),
R.R. Dist. Telangana - 501 510



Sri Indu Institute of Engineering & Technology

Recognized Under 2(f) of UGC Act 1956
Approved by AICTE, New Delhi
Affiliated to JNTUH, Hyderabad.




PRINCIPAL
Sri Indu Institute of Engineering & Tech.
Sheriguda(V), Ibrahimpatnam(M),
R.R. Dist. Telangana -601 510



Sri Indu Institute of Engineering & Technology

Recognized Under 2(f) of UGC Act 1956
Approved by AICTE, New Delhi
Affiliated to JNTUH, Hyderabad.

DEPARTMENT OF ECE CLASS ROOM PHOTOS




PRINCIPAL
Sri Indu Institute of Engineering & Tech.
Sherguda(V), Ibrahimpatnam(M),
R.R. Dist. Telangana -501 510



Sri Indu Institute of Engineering & Technology

Recognized Under 2(f) of UGC Act 1956
Approved by AICTE, New Delhi
Affiliated to JNTUH, Hyderabad.




PRINCIPAL
Sri Indu Institute of Engineering & Tech.
Sheriguda(V), Ibrahimpatnam(M),
R.R. Dist. Telangana -501 510



Sri Indu Institute of Engineering & Technology

Recognized Under 2(f) of UGC Act 1956
Approved by AICTE, New Delhi
Affiliated to JNTUH, Hyderabad.



PRINCIPAL
Sri Indu Institute of Engineering & Tech.
Sheriguda(V), Ibrahimpatnam(M),
R.R. Dist. Telangana - 501 510



Sri Indu Institute of Engineering & Technology

Recognized Under 2(f) of UGC Act 1956
Approved by AICTE, New Delhi
Affiliated to JNTUH, Hyderabad.



B-203 IV-ECE C
Sri Indu Institute of Engineering and Technology
Sheriguda, Ibrahimpatnam, Hyderabad -
Nagarjuna Sagar Rd, Telangana 501510, India
Lat N 17° 12' 34.92" Long E 78° 36' 44.964"



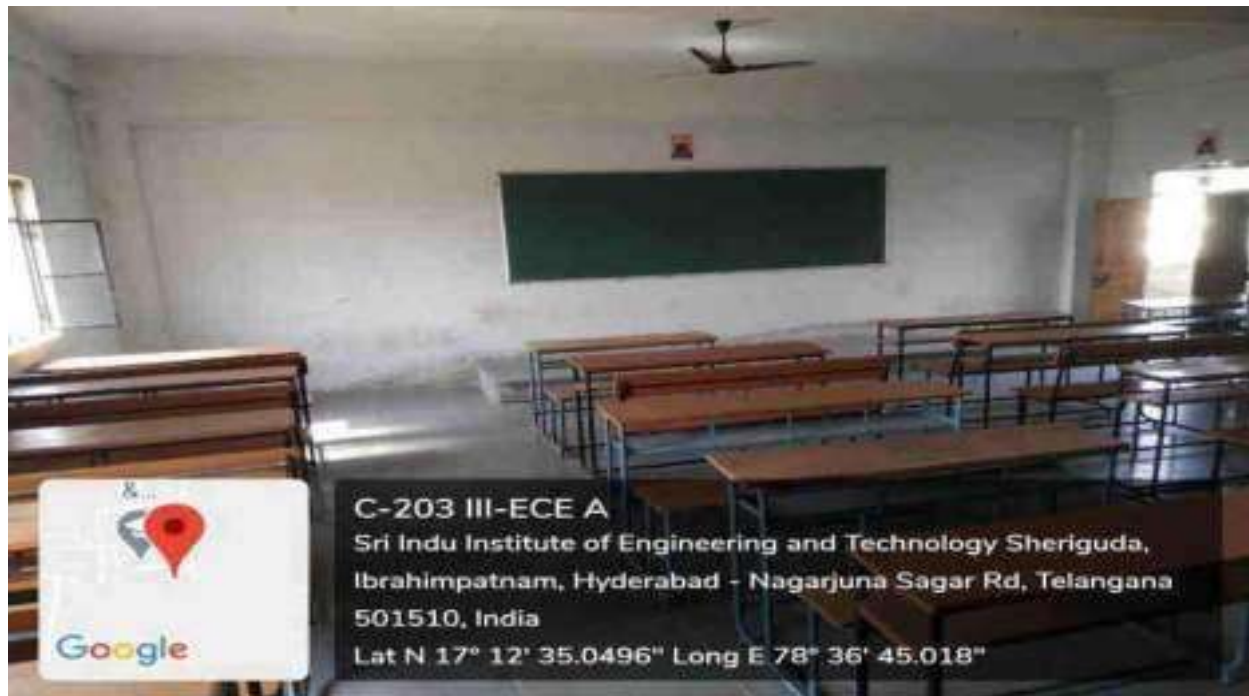
B-203 IV-ECE C
Sri Indu Institute of Engineering and Technology Sheriguda,
Ibrahimpatnam, Hyderabad - Nagarjuna Sagar Rd, Telangana
501510, India
Lat N 17° 12' 34.8408" Long E 78° 36' 45.2088"


PRINCIPAL
Sri Indu Institute of Engineering & Tech.
Sheriguda(V), Ibrahimpatnam(M),
R.R. Dist. Telangana -501 510



Sri Indu Institute of Engineering & Technology

Recognized Under 2(f) of UGC Act 1956
Approved by AICTE, New Delhi
Affiliated to JNTUH, Hyderabad.




PRINCIPAL
Sri Indu Institute of Engineering & Tech.
Sheriguda(V), Ibrahimpattanam(M),
R.R. Dist. Telangana -501 510



Sri Indu Institute of Engineering & Technology

Recognized Under 2(f) of UGC Act 1956
Approved by AICTE, New Delhi
Affiliated to JNTUH, Hyderabad.




PRINCIPAL
Sri Indu Institute of Engineering & Tech.
Sheriguda(V), Ibrahimpatnam(M),
R.R. Dist. Telangana -501 510



Sri Indu Institute of Engineering & Technology

Recognized Under 2(f) of UGC Act 1956
Approved by AICTE, New Delhi
Affiliated to JNTUH, Hyderabad.




PRINCIPAL
Sri Indu Institute of Engineering & Tech.
Sheriguda(V), Ibrahimpatnam(M),
R.R. Dist. Telangana -501 510



Sri Indu Institute of Engineering & Technology

Recognized Under 2(f) of UGC Act 1956
Approved by AICTE, New Delhi
Affiliated to JNTUH, Hyderabad.




PRINCIPAL
Sri Indu Institute of Engineering & Tech.
Sheriguda(V), Ibrahimpatnam(M),
R.R. Dist. Telangana -501 510



Sri Indu Institute of Engineering & Technology

Recognized Under 2(f) of UGC Act 1956
Approved by AICTE, New Delhi
Affiliated to JNTUH, Hyderabad.



C-101 II-ECE B
Sri Indu Institute of Engineering and Technology Sheriguda,
Ibrahimpattam, Hyderabad - Nagarjuna Sagar Rd, Telangana
501510, India
Lat N 17° 12' 34.9596" Long E 78° 36' 45.1872"



C-101(II-ECE B)
Sri Indu Institute of Engineering and Technology
Sheriguda, Ibrahimpattam, Hyderabad -
Nagarjuna Sagar Rd, Telangana 501510, India
Lat N 17° 12' 35.1036" Long E 78° 36' 45.2806"


PRINCIPAL
Sri Indu Institute of Engineering & Tech.
Sheriguda(V), Ibrahimpattam(M),
R.R. Dist. Telangana -501 510



Sri Indu Institute of Engineering & Technology

Recognized Under 2(f) of UGC Act 1956
Approved by AICTE, New Delhi
Affiliated to JNTUH, Hyderabad.

DEPARTMENT OF ECE LABORATORY PHOTOS




PRINCIPAL
Sri Indu Institute of Engineering & Tech.
Sheriguda(V), Ibrahimpatnam(M),
R.R. Dist. Telangana -501 510



Sri Indu Institute of Engineering & Technology

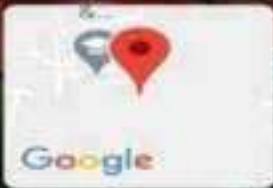
Recognized Under 2(f) of UGC Act 1956
Approved by AICTE, New Delhi
Affiliated to JNTUH, Hyderabad.



Basic Simulation Lab

Sri Indu Institute of Engineering and Technology, Sheriguda,
Ibrahimpattam, Nagarjuna Sagar Rd, , Telangana 501510,
India

Lat N 17° 12' 35.6184" Long E 78° 36' 45.0972"



Digital System Design Lab

Sri Indu Institute of Engineering and Technology Sheriguda,
Ibrahimpattam, Hyderabad - Nagarjuna Sagar Rd, Telangana
501510, India

Lat N 17° 12' 34.74" Long E 78° 36' 45.54"


PRINCIPAL
Sri Indu Institute of Engineering & Tech.
Sheriguda(V), Ibrahimpattam(M),
R.R. Dist. Telangana -501 510



Sri Indu Institute of Engineering & Technology

Recognized Under 2(f) of UGC Act 1956
Approved by AICTE, New Delhi
Affiliated to JNTUH, Hyderabad.




PRINCIPAL
Sri Indu Institute of Engineering & Tech.
Sheriguda(V), Ibrahimpatnam(M),
R.R. Dist. Telangana -501 510



Sri Indu Institute of Engineering & Technology

Recognized Under 2(f) of UGC Act 1956
Approved by AICTE, New Delhi
Affiliated to JNTUH, Hyderabad.




PRINCIPAL
Sri Indu Institute of Engineering & Tech.
Sheriguda(V), Ibrahimpatnam(M),
R.R. Dist. Telangana -501 510



Sri Indu Institute of Engineering & Technology

Recognized Under 2(D) of UGC Act 1986
Approved by AICTE, New Delhi
Affiliated to JNTU, Hyderabad.



Electronic Devices and Circuits Lab
Sri Indu Institute of Engineering and Technology Sheriguda,
Ibrahimpattam, Hyderabad - Nagarjuna Sagar Rd, Telangana
501510, India
Lat N 17° 12' 34.992" Long E 78° 36' 46.4796"



Data Communications and Networks Lab
Sri Indu Institute of Engineering and Technology, Sheriguda,
Ibrahimpattam, Nagarjuna Sagar Rd, , Telangana 501510,
India
Lat N 17° 12' 35.2224" Long E 78° 36' 46.6884"


PRINCIPAL
Sri Indu Institute of Engineering & Tech.
Sheriguda(V), Ibrahimpattam(M),
R.R. Dist. Telangana -501 510



Sri Indu Institute of Engineering & Technology

Recognized Under 2(f) of UGC Act 1956
Approved by AICTE, New Delhi
Affiliated to JNTUH, Hyderabad.



Data Communications and Networks Lab
Sri Indu Institute of Engineering and Technology, Sheriguda,
Ibrahimpattam, Nagarjuna Sagar Rd., Telangana 501510,
India
Lat N 17° 12' 37.3176" Long E 78° 36' 46.8684"



Data Communications and Networks Lab
Sri Indu Institute of Engineering and
Technology, Sheriguda, Ibrahimpattam, Nagarjuna
Sagar Rd., Telangana 501510, India
Lat N 17° 12' 35.4708" Long E 78° 36' 45.8892"


PRINCIPAL
Sri Indu Institute of Engineering & Tech.
Sheriguda(V), Ibrahimpattam(M),
R.R. Dist. Telangana -501 510



Sri Indu Institute of Engineering & Technology

Recognized Under 2(f) of UGC Act 1956
Approved by AICTE, New Delhi
Affiliated to JNTUH, Hyderabad.



Microprocessor & Microcontrollers Lab
Sri Indu Institute of Engineering and Technology Sheriguda,
Ibrahimpattnam, Hyderabad - Nagarjuna Sagar Rd, Telangana
501510, India
Lat N 17° 12' 34.8588" Long E 78° 36' 45.1224"



Microprocessor & Microcontrollers Lab
Sri Indu Institute of Engineering and Technology Sheriguda,
Ibrahimpattnam, Hyderabad - Nagarjuna Sagar Rd, Telangana
501510, India
Lat N 17° 12' 34.8408" Long E 78° 36' 45.018"


PRINCIPAL
Sri Indu Institute of Engineering & Tech.
Sheriguda(V), Ibrahimpattnam(M),
R.R. Dist. Telangana - 501 510



Sri Indu Institute of Engineering & Technology

Recognized Under 2(f) of UGC Act 1956
Approved by AICTE, New Delhi
Affiliated to JNTUH, Hyderabad.




PRINCIPAL
Sri Indu Institute of Engineering & Tech.
Sherguda(V), Ibrahimpatnam(M),
R.R. Dist. Telangana - 501 510



Sri Indu Institute of Engineering & Technology

Recognized Under 2(f) of UGC Act 1956
Approved by AICTE, New Delhi
Affiliated to JNTU, Hyderabad.



Microwave Engineering Lab
Sri Indu Institute of Engineering and Technology
Sheriguda, Ibrahimpatnam, Hyderabad - Nagarjuna Sagar Rd,
Telangana 501510, India
Lat N 17° 12' 34.8552" Long E 78° 36' 45.0072"



Microwave Engineering Lab
Sri Indu Institute of Engineering and Technology
Sheriguda, Ibrahimpatnam, Hyderabad -
Nagarjuna Sagar Rd, Telangana 501510, India
Lat N 17° 12' 34.9092" Long E 78° 36' 45.2304"


PRINCIPAL
Sri Indu Institute of Engineering & Tech.
Sheriguda(V), Ibrahimpatnam(M),
R.R. Dist. Telangana - 501 510



Sri Indu Institute of Engineering & Technology

Recognized Under 2(f) of UGC Act 1956
Approved by AICTE, New Delhi
Affiliated to JNTU, Hyderabad.



Library

Sri Indu Institute of Engineering and Technology, Sheriguda,
Ibrahimpattam, 501510
Lat N 17° 12' 35.0172"
Long E 78° 36' 46.35"
08/04/21 02:11 PM



Library

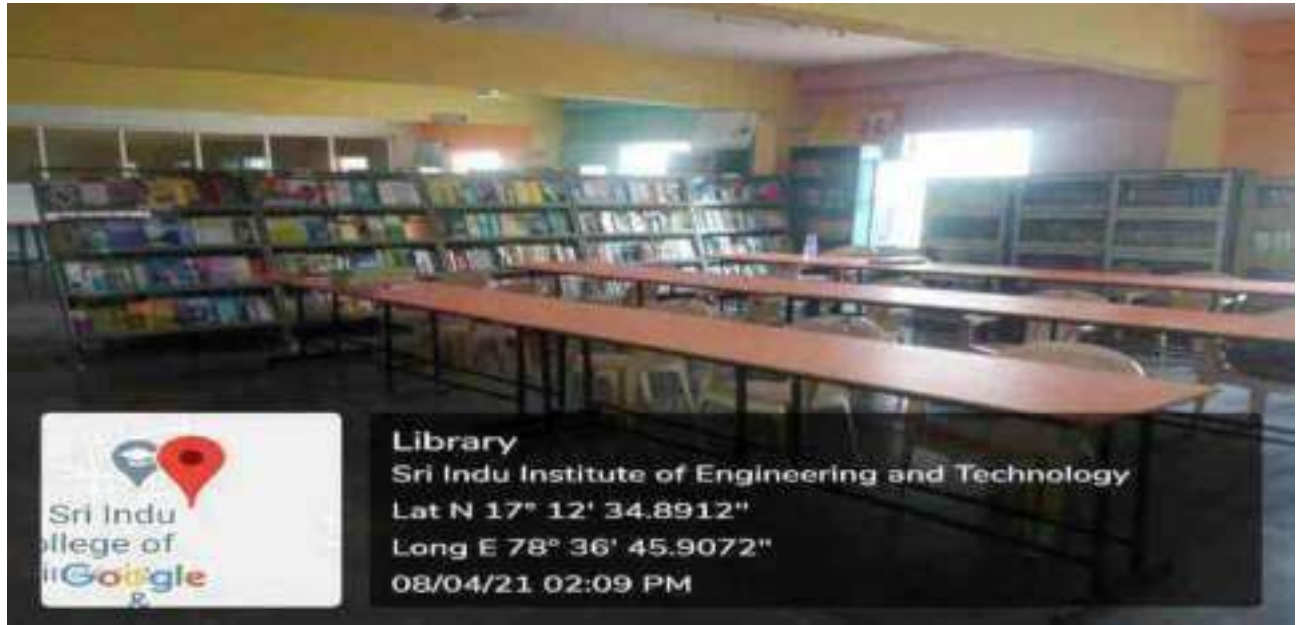
Sri Indu Institute of Engineering and Technology
Lat N 17° 12' 34.8912"
Long E 78° 36' 45.9072"
08/04/21 02:09 PM


PRINCIPAL
Sri Indu Institute of Engineering & Tech,
Sheriguda(V), Ibrahimpattam(M),
R.R. Dist. Telangana -501 510



Sri Indu Institute of Engineering & Technology

Recognized Under 2(f) of UGC Act 1956
Approved by AICTE, New Delhi
Affiliated to JNTUH, Hyderabad.




PRINCIPAL
Sri Indu Institute of Engineering & Tech.
Sherguda(V), Ibrahimpatnam(M),
R.R. Dist. Telangana -501 510



Sri Indu Institute of Engineering & Technology

Recognized Under 2(f) of UGC Act 1956
Approved by AICTE, New Delhi
Affiliated to JNTUH, Hyderabad.




PRINCIPAL
Sri Indu Institute of Engineering & Tech.
Sheriguda(V), Ibrahimpatnam(M),
R.R. Dist. Telangana -501 510



Sri Indu Institute of Engineering & Technology

Recognized Under 2(f) of UGC Act 1956
Approved by AICTE, New Delhi
Affiliated to JNTUH, Hyderabad.

AUDITORIUM PHOTOS




PRINCIPAL
Sri Indu Institute of Engineering & Tech.
Sheriguda(V), Ibrahimpatnam(M),
R.R. Dist. Telangana -501 510



Sri Indu Institute of Engineering & Technology

Recognized Under 2(f) of UGC Act 1956
Approved by AICTE, New Delhi
Affiliated to JNTUH, Hyderabad.




PRINCIPAL
Sri Indu Institute of Engineering & Tech.
Sheriguda(V), Ibrahimpatsam(M),
R.R. Dist. Telangana -501 510



Sri Indu Institute of Engineering & Technology

Recognized Under 2(f) of UGC Act 1956
Approved by AICTE, New Delhi
Affiliated to JNTU, Hyderabad.

GIRLS HOSTEL PHOTOS




PRINCIPAL
Sri Indu Institute of Engineering & Tech.
Sheriguda(V), Ibrahimpatnam(M),
R.R. Dist. Telangana -501 510